

WeatherPlank Siding Products

Introduction

WeatherPlank Siding products are made of autoclaved fibre cement reinforced calcium silicate boards that are 100% free from asbestos or sepiolite. Since WeatherPlank is laminated of specially formulated calcium silicate mixtures and selected fibres to form the designated thickness, unlike other siding boards made of vinyl or timber materials, maintenance cost of WeatherPlank is low. It is robust, impact resistant, moisture resistant and non-combustible. It is designed for use in direct weathering applications when used in conjunction with external grade textured finishes and other surface coatings or internal decorated applications. It can hold paint finishes 3-4 times longer than other siding board materials do. It has high water vapour permeability which helps eliminate condensation or water trapped behind the boards. Available products include WeatherPlank Siding, WeatherTrim and WeatherPlank Panel. WeatherPlank Siding Products are ISO9001:2000 (Certificate of Conformity of Quality Management System Certification) and ISO14001:1996 (Environmental Management System Certificate) certified and have obtained Green Product Label Award issued by National Environment Protection Bureau.



Description

WeatherPlank is made of WeatherPro®-L fibre cement reinforced calcium silicate board, which is produced from a mixture of cement, silica, special cellulose fibres and selected fillers to impart durability, toughness and moisture resistance. It is then cured by an autoclaving process whereby the ingredients are reacted together under the effects of super-heated steam and high pressure. The synthetic cement silicate binder provides exceptional dimensional stability and an unrivalled resistance to movement due to effects of moisture or heat. WeatherPlank will not rot or support fungal growth and is unaffected by sunlight or steam. It does not contain any soluble ingredients or free alkali which could be dissolved by moisture or condensation causing unsightly marks. If exposed to moisture, WeatherPlank will completely recover on drying out naturally, with no permanent loss of strength. It will not degrade with time and within normal applications, the life of the product is limited only by the durability of the supporting structure and materials used in fastening.



WeatherPlank Siding in Worn Finish



Surface Textures

WeatherPlank is easy to cut on site with standard wood working tools. Where seamless finishes are required, it can be finished with thin coat polymeric renders or other surface coatings to give a seamless finish. Standard WeatherPlank is off-white in colour and has a high quality embossed wood-like, wood grain smooth or traditional smooth surface textures.

Surface textures	WeatherPlank Siding	WeatherTrim	WeatherPlank Panel
Embossed wood-like	✓	-	✓
Wood grain smooth	✓	✓	✓
Traditional Smooth	✓	✓	✓

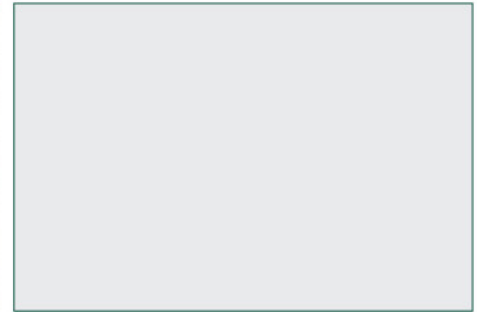
Embossed wood-like



Wood grain smooth



Traditional smooth



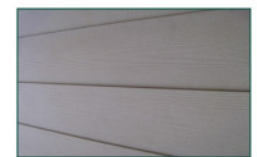
Colours

Standard WeatherPlank comes with un-decorated off-white natural finish. Pre-primed WeatherPlank is available. For pre-primed WeatherPlank, the primed coat is on the front face only. This reduces water uptake and enhances compatibility with the coating system. However, coating manufacturers' recommendations must be followed.

Sizes

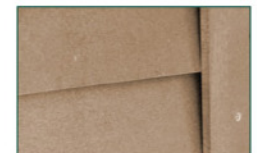
WeatherPlank Siding

WeatherPlank Siding is pre-cut in size for applications on planking, facades and shop fronts.



WeatherTrim

WeatherTrim is pre-cut in size. It provides unmatched durability at corners, windows, columns and friezes.



WeatherPlank Panel

WeatherPlank Panel is produced in full-sized standard board for wall paneling decoration. It can easily be cut on site to match various architectural features

Sizes	WeatherPlank Siding	WeatherTrim	WeatherPlank Panel
Thickness	7.5 / 9mm	12mm	9 / 12mm
Width	260mm	100mm	1170mm
Length	3000 / 3660mm	2440mm	3000mm

Note: Other colours, textures or sizes are also available and can be produced to special order.

Manufacturing Tolerances

Length tolerance +/- 5mm

Width tolerance +/- 5mm

Thickness tolerance +/- 0.3mm

Diagonal tolerance +/- 5mm

Note: Account for full-sized panels

WeatherPlank Siding Products

Performance

Density	1300 kg/m ³ +/-5%
Surface alkalinity	pH 7-10
Flexural strength (along grain)	10.50 MPa
Flexural strength (across grain)	13.80 MPa
Moisture movement (ambient to saturated)	0.5 mm/m
Moisture content	Ex works - 15% In situ - 5%
Thermal conductivity	0.20 W/mK
Resistance to continuous heating	80°C
Non-combustibility	BS 476: Part 4: 1970 BS EN ISO 1182: 2002 GB8624-1997, Grade A
Heat of combustion	BS EN ISO 1716: 2002
Building regulations classification	Euro Class A1
Non-permeability	ASTM C1185:2003
Freezing and thawing test	No alteration nor de-lamination after 25cycles of freezing/thawing
Minimum Bending Radius (along grain)	5600mm for 7.5mm 6600mm for 9mm 8800mm for 12mm

Specific Properties



Bent to shape



Decorative finishes by paint or tiles



Economical



Easy to use



Excellent dimensional stability



Frost resistance



Sound-proof



Good chemical resistance



Impact resistance



Lightweight but strong



Maintenance friendly



Non-combustible
BS 476: Part 4
BS EN ISO 1182

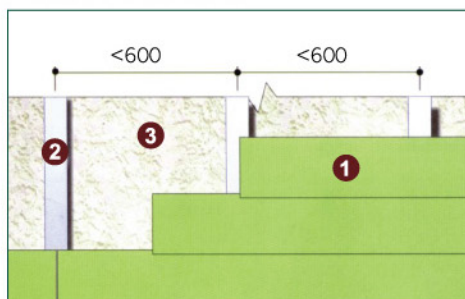


Rot proof,
anti-bacterial, resistant
to insects and mould
growth

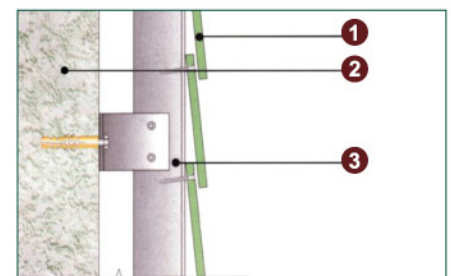


Weather-proof

Typical siding fixing detail



1. WeatherPlank Siding
2. Steel or Wood Studs
3. Wall

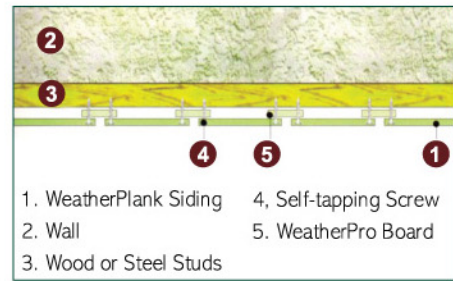


1. WeatherPlank Siding
2. Wall
3. Steel Sub-frame

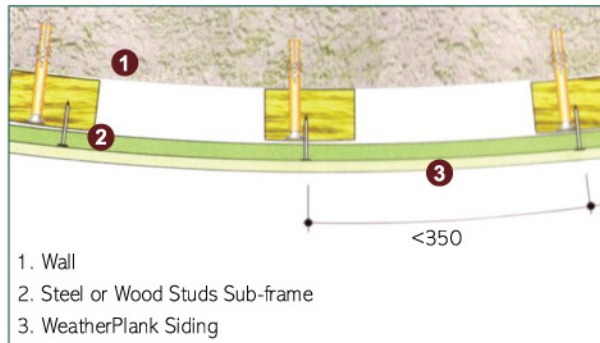
Typical Fixing Methods

Typical Fixing Methods

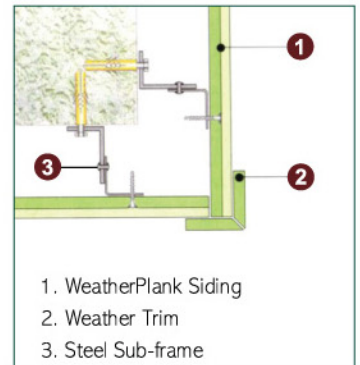
Vertical featured siding fixing detail



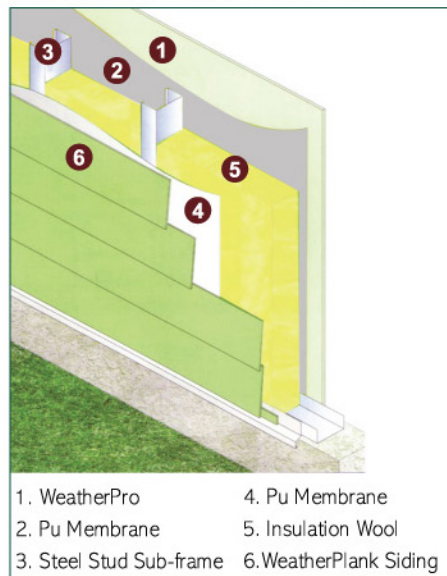
Typical curved siding



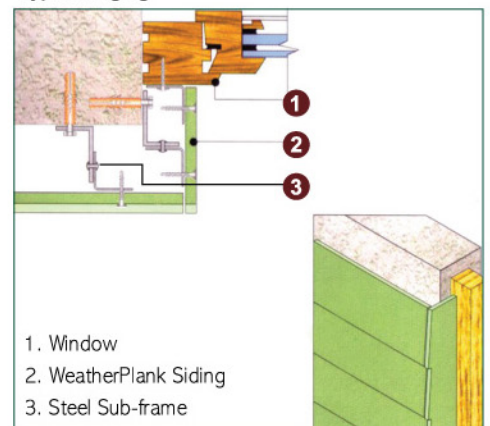
Typical edging with trims



WeatherPlank siding with steel framed external wall



Typical edging



Details of construction please contact Soben International



Application

WeatherPlank can be used in a wide variety of building applications because of its easy working, fixing and decorating characteristics. It can also be used at curved section. Typical applications include:

- Lap siding for façade and shop front
- Decorative curved façade
- Internal and external wall paneling
- Decorative featured wall panel
- Wet area lining
- Eaves and ceiling soffit lining

Health & Safety

WeatherPlank is formulated without asbestos, sepiolite or any inorganic fibres. When using power saws or sanders in a confined space, dust extraction equipment is recommended to control dust levels. WeatherPlank is designed for non-load bearing construction. Horizontal planking or panels must not be walked on as they are not designed to take additional loads between supports; if there is a risk of this occurring, warning notices should be displayed. Fixers must ensure that they work from adequate and safe platforms where necessary.